

REDD+ Capacity building experiences: a general overview



Elena Florian, MSc.

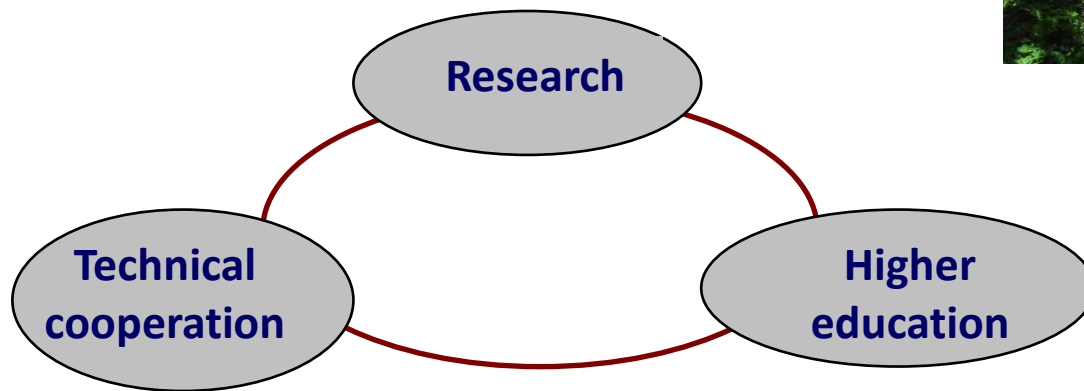
Climate Change and Watersheds Program

AGRC Technical Review Workshop

July 2013

Our Mission

To contribute to rural poverty reduction by promoting competitive and sustainable agriculture and natural resource management, through higher education, research and technical cooperation.



Where we work



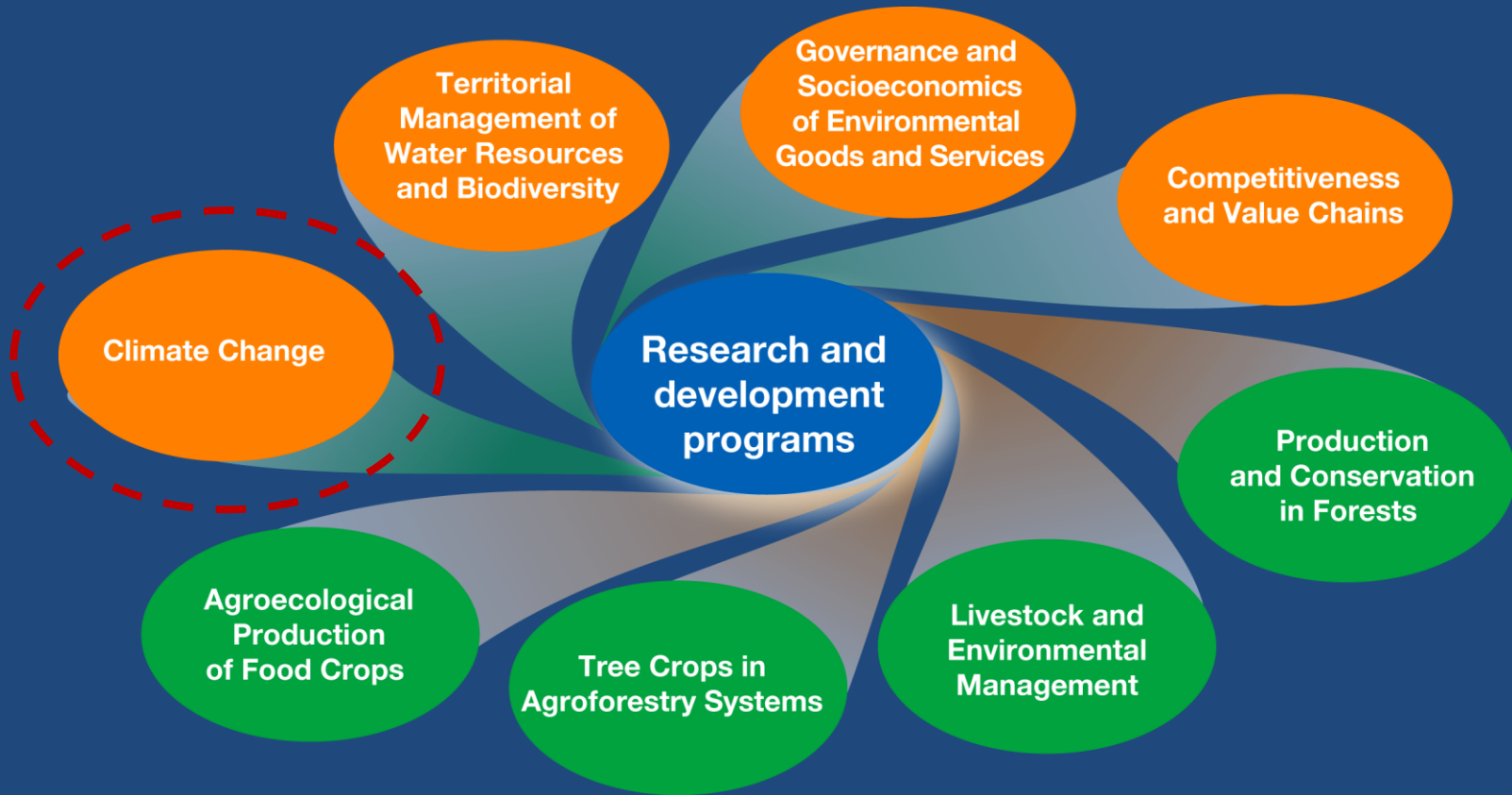
Headquarters in Turrialba,
Costa Rica

National technical offices in
Belize
Bolivia
El Salvador
Guatemala
Honduras
Nicaragua
Panama



Member Countries

Scientific Programs



Key areas of capacity building



Blue Carbon

GIZ, BIOMARCC

- Estimates of Ecosystem C stocks
- Costa Rica, Honduras, Ecuador



MRV

REDD-CCAD-GIZ, PNUD, FAO

- National and regional monitoring systems
- Consolidation of regional team
- RL (Panamá, Paraguay)



Social implications and REDD+

ClimateWorks, GIZ, WB/FONAFIFO

- Political incidence
- Consultation processes
- Gender issues
- Safeguards



Forest governance

GIZ

- Stakeholder engagement
- Improvement of technical competencies

Capacity building program for cultural facilitators

Applying FPIC principles

CATIE/RIBCA

Phase 1

Political socialization with local authorities and contextualizing a training program

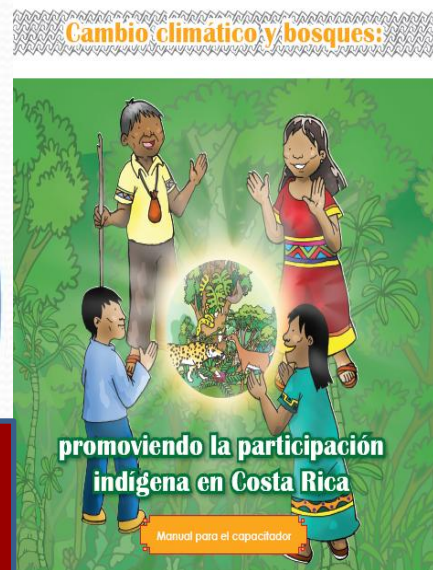
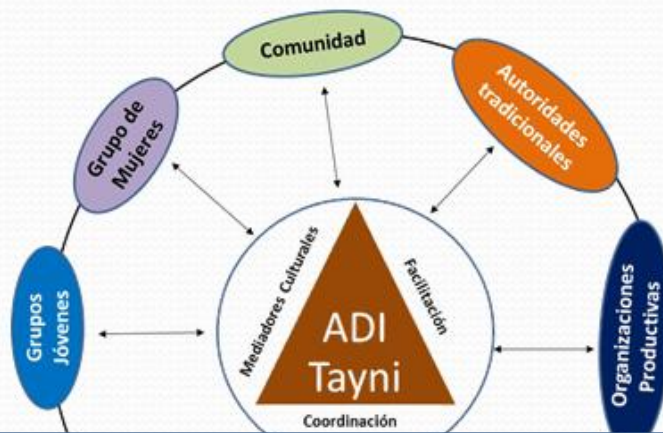
Phase 2

Train for trainers course

Phase 3

Providing information to the communities

Support for the national consultation process



Importance of getting to know the audience....



Target groups

- National government
- Local governments
- Field technicians and extensionists
- NGOs
- Academic sector
- Private sector
- Local and indigenous communities



Some important lessons

- Generation and strengthening of scientific and technical knowledge in the region
- Opportunity to share experiences between different countries
- Improvement of political incidence, stakeholder engagement and leadership skills
- Consolidation of strategic alliances between governments, organizations and synergies between projects/regional initiatives



Many Thanks!

Elena Florian

eflorian@catie.ac.cr



Climate Change and
Watersheds Program